

FOR LEASE

563 MEMORIAL DRIVE, AT THE CORNER OF MEMORIAL AND PARK AVE. ATLANTA, GA.

## PROPERTY HIGHLIGHTS

Only two spaces left!

1160sf (on Park Ave)

2356sf (on Memorial)

Green building (LEED Certified)



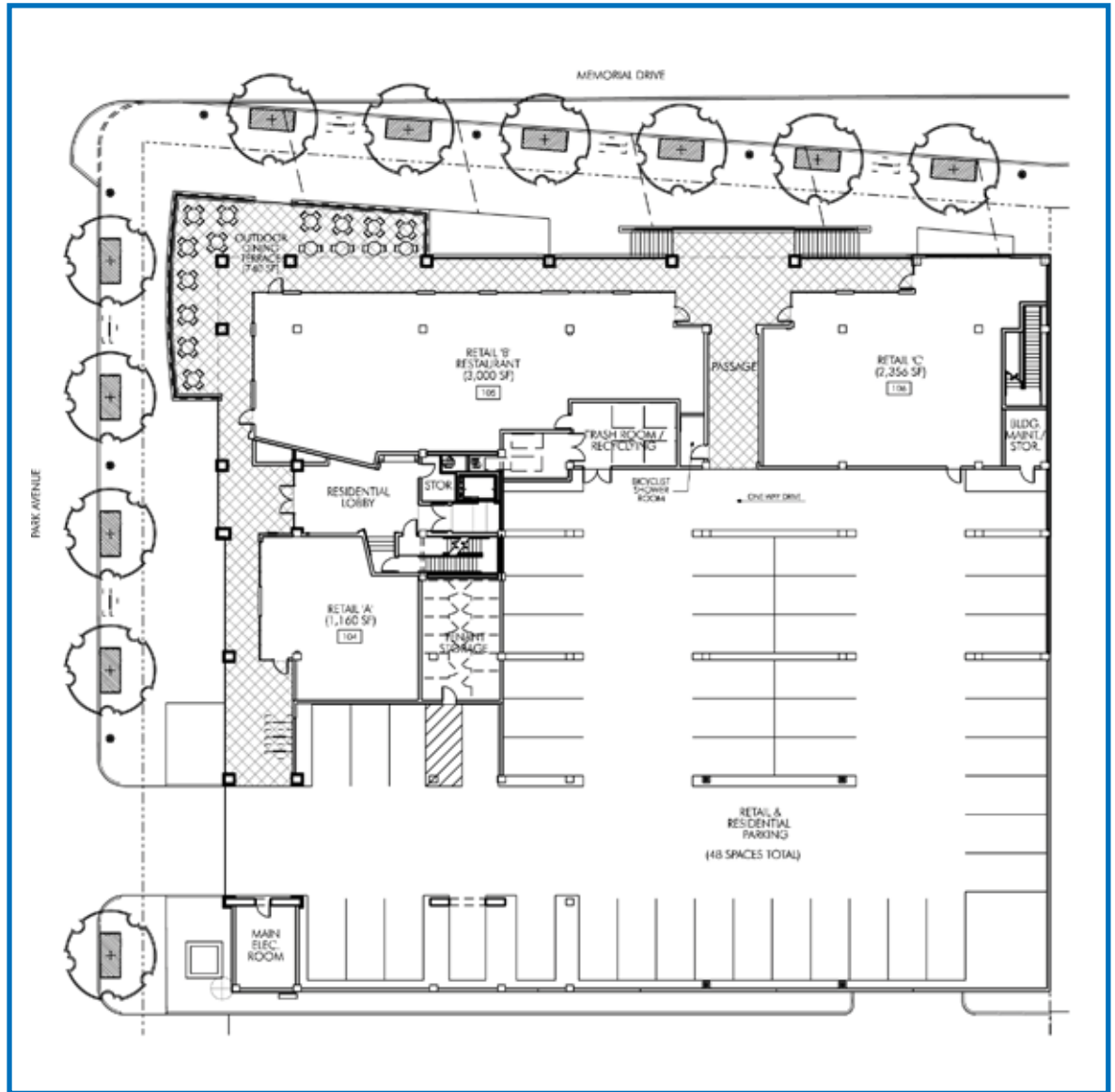
**CAMDEN**  
Commercial Real Estate

**WARREN BRUNO** 404.272.8505 [warren.bruno@camdencre.com](mailto:warren.bruno@camdencre.com)  
**KIM BROWN** 404.578.5816 [kim.brown@camdencre.com](mailto:kim.brown@camdencre.com)

CAMDEN COMMERCIAL REAL ESTATE 996 OLD POWERS FERRY ROAD ATLANTA, GA 30327 [WWW.CAMDENCRE.COM](http://WWW.CAMDENCRE.COM)

563 MEMORIAL DRIVE, AT THE CORNER OF MEMORIAL AND PARK AVE. ATLANTA, GA.

FOR LEASE



**CAMDEN**  
Commercial Real Estate

**WARREN BRUNO** 404.272.8505 [warren.bruno@camdencre.com](mailto:warren.bruno@camdencre.com)  
**KIM BROWN** 404.578.5816 [kim.brown@camdencre.com](mailto:kim.brown@camdencre.com)

**CAMDEN COMMERCIAL REAL ESTATE** 996 OLD POWERS FERRY ROAD ATLANTA, GA 30327 [WWW.CAMDENCRE.COM](http://WWW.CAMDENCRE.COM)